

Frequently asked questions

Why has Advance Care Planning Australia partnered with Yarno to deliver learning?

We know the health workforce is extremely time-pressed, with increased demands, making it challenging to prioritise learning. We also knew we wanted to offer innovative and engaging learning to make sure you could use your time wisely. Microlearning is a solution that delivers learning in small, bite-sized doses. It is easier to absorb content, can be learnt on the go, in the flow of work, and at a time convenient to the learner. Yarno is the first and oldest microlearning business in Australia, founded in 2015 when microlearning was a brand-new concept in the learning landscape. They know what they are doing!

Do I need to sign up for an account with Yarno before accessing the learning?

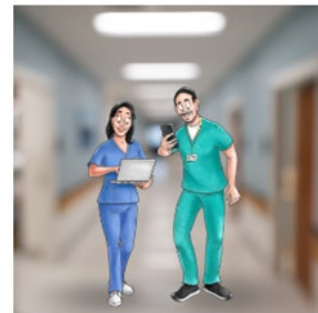
Yes, but don't worry, it will only take a couple minutes. Once you click on the campaign link from the Advance Care Planning Australia website, you will be prompted to register an account with Yarno. You will provide your name and an email address which will need to be validated. You will create a password so you can access the system again in the future. We also request your job title / role and the state or territory which you come from. Further information about signing in and passwords is available through [Yarno Support](#).

How do I navigate the Yarno platform?

If you need any help to navigating the platform, just log into Yarno and click on the small '?' symbol in the top right-hand corner and then press 'TAKE TOUR'.

Who is Seneca?

You may notice Yarno's mascot, Seneca, pop up now and then as you complete your questions and engage with the Yarno platform. More than just a cartoon on your screen, Seneca was actually a well-known Stoic philosopher whose ideas influenced the development of Yarno. Seneca wrote about the importance of focusing our energy on the things we can change (e.g. increasing our knowledge, levelling up our skills) rather than sweating about the things we can't. He also believed that we shouldn't let our egos get in the way of learning. As a champion for growth and open-mindedness, Seneca embodies the Yarno spirit and will be cheering you on as you learn with us!



What is a 'campaign'?

A set of quiz questions, explanations, and engaging multimedia are collated under a common topic area to meet specific learning objectives. This is a campaign! Yarno believes in the power of the learning campaign. Learning campaigns are a more structured style of microlearning that delivers information strategically, through a series of engaging learning experiences that occur over time. The ultimate goal is to embed information into a learner's long-term memory and create lasting behaviour change.

How many campaigns will there be?

A total of six campaigns will be released over the next few months.

Are these quizzes meant to be a test?

Quizzing is a great way to introduce new concepts. This means you might be answering a question based on something you haven't learnt before. That is OK. This program is meant to be a learning tool, not an exam. It is OK to get questions wrong, it is a great way to learn new things in a short amount of time. After you answer a question, you will get an opportunity to read a short explanation that will provide you with some additional information. It is there to help you understand what may be a new concept.

Once I complete a campaign, can I repeat the learning?

Although you can no longer answer questions, you can view past questions and your stats via the Dashboard. You will also have access to the Learning Library where you can access all the training material (quizzes and explanations) from campaigns you have completed.

What do the % next to the answers mean?

After you answer a question, you'll notice percentages next to each answer choice. These are a reflection of how other participants have answered the same question.

Will I get a certificate?

After each campaign a certificate of completion will be generated and emailed to you within two weeks of completion.

I have more questions....

Send us an email to education@advancecareplanning.org.au